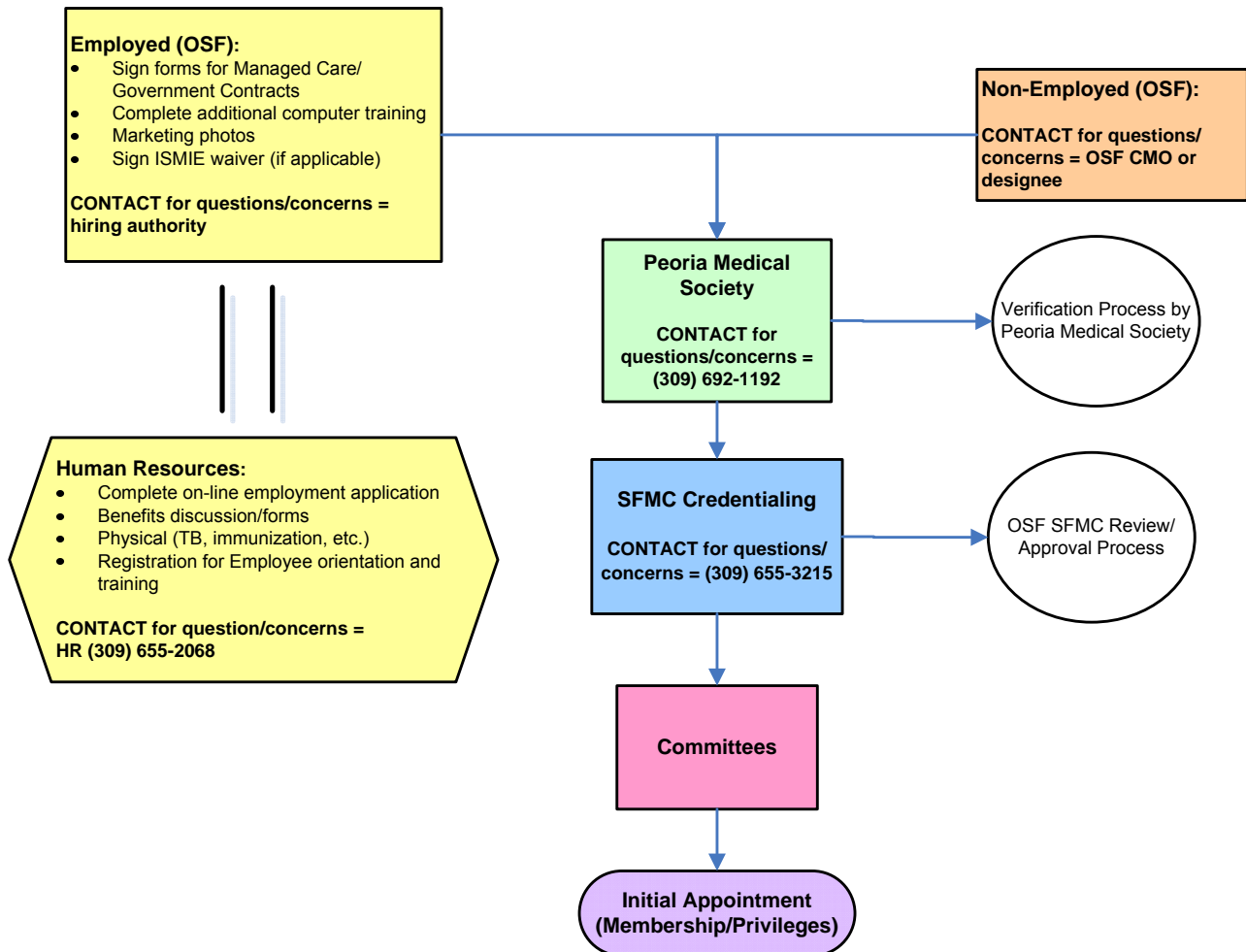


Overview of the Initial Application Process



Applicant Responsibilities:

- Carefully read all instructions provided
 - Incomplete or inaccurate information may lead to delays in the initial application process
- Obtain State of Illinois License
- Obtain State of IL Controlled Substance license and Federal DEA
- Obtain/provide proof of malpractice insurance
- Complete Peoria Medical Society packet
- Complete OSF SFMC supplemental packet (including mandatory on-line orientation)
 - SFMC Credentialing staff will contact you to set up appointment time for ID, photos, and parking badge

SFMC Employees:

- Complete SFMC on-line employment application form
- Complete all necessary computer training courses
- Complete ISMIE application or waiver (if applicable)
- Complete payer forms